

CADAC |  DOMETIC

THREADED CARTRIDGE REGULATOR ASSEMBLY

P/C: 343, 343-QR

29mbar



P/C: 343



P/C: 343-QR



USER INSTRUCTIONS

EN DE NL FR DK NO IT ES PL SE FI TR

Explanation of Symbols



Recycling packaging material. Place the packaging material in the appropriate recycling waste bins wherever possible.

CAUTION

Provide ample ventilation. Do not use this appliance in an unventilated space to avoid endangering your life. If still more gas appliances and/or occupants using gas are added to the space, additional ventilation must be provided.

IMPORTANT

Read these instructions carefully so as to familiarise yourself with the appliance before fitting the appliance to a gas cylinder.

Retain these instructions for future reference.

1. General

- This regulator is used with Butane disposable threaded cartridges.
- A regulator is an appliance that converts the high pressure inside a cartridge to low pressure after it exits the regulator. The outlet pressure is set at a fixed pressure of 29mbar and this is independent of the inlet pressure of the gas cartridge. The gas cartridge internal pressure varies significantly depending on the temperature of the cartridge. Therefore use of a regulator ensures that the appliance works at a constant pressure and not a variable one.
- Make sure that the horizontal outlet valve on the regulator is in the "off" position. Connect the cartridge to the regulator by screwing the cartridge into the underside of the regulator.
- Ensure that both the regulator and the rubber seal on the regulator are in good condition and that the seal is not worn, damaged or perished.
- Connect the outlet hose connector to the appliance and ensure that it is tightened properly. This requires a small twist using a spanner as it must not just be "finger-tight".
- Open the regulator outlet valve fully. Use soapy-water to check for leaks at all connections. A leak will be visible by bubbles appearing in the soapy water. If a leak is found, turn off the cartridge valve and ensure all connections are tight. If the gas leak persists, remove the cartridge from the regulator and return the leaking part to the original store of purchase. The leak may be between the cartridge and the regulator, on the hose, or between the hose and the appliance.
- Under normal conditions of use, in order to ensure the correct operation of the installation, it is recommended that this regulator is changed within 10 year of the date of manufacture.
- The regulator is for outdoor use only! Keep it away from any source of flammable materials.
- Do not move the cartridge during operation.
- Only to be used with EN417 type disposable cartridges.

2. Assembly & Use**343**

1: Hand wheel (17mm Hex) and hose component

2: Move the handle wheel to the end of the hose sliding it over the brass nut.

3: Connect brass nut to the inlet of the BBQ, turn the hand wheel to tighten.

Note: The brass nut fits onto an appliance with a ¼" BSP left hand threaded inlet fitting. Attach the cartridges in a well-ventilated area.



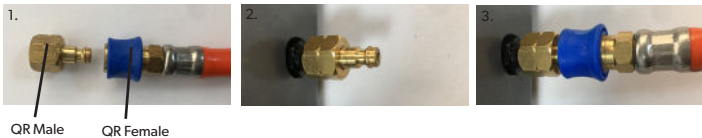
343-QR

1: Remove QR male.

2: Connect QR male to the inlet of your product and turn to tighten.

3: Connect QR female to QR male by pushing the QR female onto the QR male.

Note: The brass nut fits onto an appliance with a 1/4" BSP left hand threaded inlet fitting. Attach the cartridges in a well-ventilated area.



CADAC EUROPE

Ratio 26, 6921 RW Duiven
The Netherlands
Tel: +31 26 319 7740
Email: info@cadaceurope.com
www.cadacinternational.com

CADAC GERMANY

Ratio 26, 6921 RW Duiven
The Netherlands
Tel: +31 26 319 7740
Email: info@cadaceurope.com
www.cadacinternational.com

CADAC ITALY

Brunner SRL/GMBH
via Buozzi, 8
39100 Bolzano (Italy)
Tel: +39 0471 542900
Email: info@brunner.it
www.brunnerinternational.com

CADAC SOUTH EAST EUROPE

Bulevar oslobodjenja 285
Tel: +381 11 339 2700
Email: sinisaj@cadac.rs
www.cadac.rs

CADAC IRAN

Robin Bazargan Carin Co.
Unit D, 6th Floor, Negin Zafar
Building, No.1327,
Shariati Street, Tehran, Iran
Tel: +98 21 276 00 781
Mail: info@cadac.ir

CADAC CHINA

Room 807, Huayue International
Building, No.255 Tiangao Road,
South
Yinzhou business district,
Ningbo, China
Tel: +86 574 87723937
Email: info@cadac.com.cn

CADAC UK

14 Deanfield Court,
Link59 Business Park,
Clitheroe, Lancashire,
BB7 1QS
United Kingdom.
Tel: +44 (0) 333 2000363
E:mail: info@cadacuk.com
www.cadacinternational.com

CADAC FRANCE

Le Viallon, 42520 Veranne
France
Tel: +33 4 74 78 13 65
Email : info@cadaceurope.com
www.cadacinternational.com

CADAC SCANDINAVIA

Millarco International A/S
Rokhøj 26
8520 Lystrup, Denmark
Phone: +45 87 43 42 00
millarco@millarco.dk
www.millarco.com

CADAC FINLAND

OY KAMA FRITID AB
Koivuhaantie 2-4 B
01510 VANTAA
00358 20 792 0310
info@kamafritid.fi

CADAC DENMARK

Camper Fritid
Industrivej 11
6640 Lunderskov, Denmark
Tel.: +45 7558 5255
Email: info@camper.dk
www.camper.dk

CADAC SWEDEN & NORWAY

KAMA FRITID AB
0046 36 353700
info@kamafritid.se

CADAC | DOMETIC SOUTH AFRICA

Front Runner Outfitter RSA
C/o Forssman Close & River Rd,
Barbecue Downs, Kyalami,
Johannesburg
+27 11 466 0155
www.frontrunneroutfitters.com/en/za/

CADAC NEW ZEALAND

Riverlea Group (Pty) Ltd
2A Maui Street, Pukete,
Hamilton 3200, New Zealand
Tel: +64 7 847 0204
Email: sales@riverleagroup.co.nz
www.riverleagroup.co.nz

CADAC MONTENEGRO

City kvart ZIL6
81000 Podgorica, Montenegro
Tel 38220671446, 38269020063
E-mail: coca@t-com.me

CADAC POLAND

Kamai
Wola Batorska 461
32-007 Wola Batorska Poland
Tel: +48 12 635 1373
Email: handlowy@kamai.pl
www.kamai.pl

CADAC U.A.E.

Supreme Impex General Trading
LLC Office No. 1801-7 Latifa
Tower Sheikh Zayed Road
Dubai, UAE

CADAC Czech Rep.

RÖSLER Praha spol. s r.o.
K Horkám 19/21
102 00 Praha 10 Česká republika
Tel: +420 267 188 011
Email: info@rosler.cz
www.rosler.cz